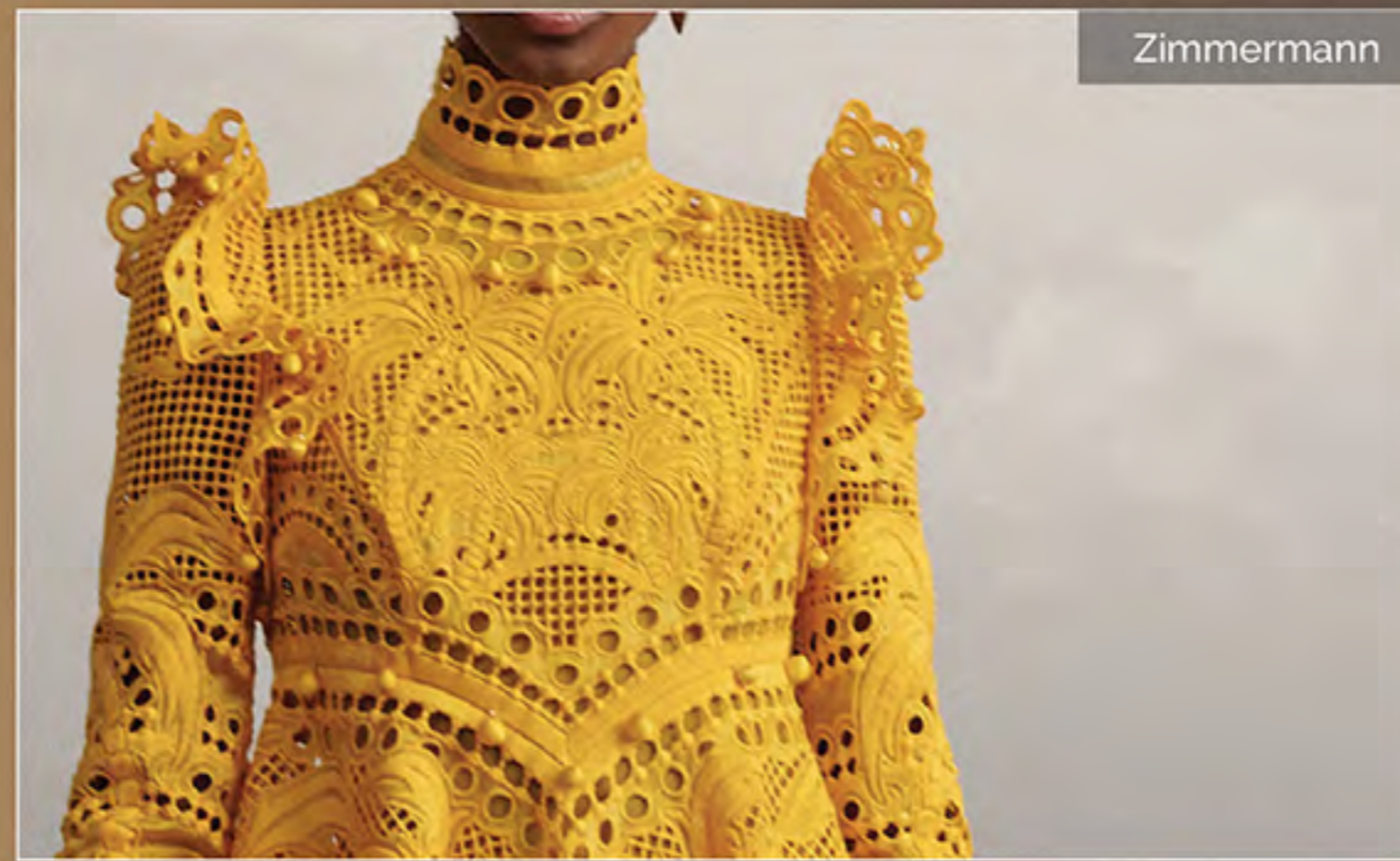


## KEY TRENDS\_*Colour 1*

MANGO  
MAGIC  
13-0947TCX

BLACK  
COFFEE  
19-1111TCX



# SUN-INFUSED MID-TONES

Sun-infused mid-tones have been hugely popular lately: in women's apparel, they have been among the quickest to fly off the shelves. Sales indicate a combination of these shades with core styles are gaining ground.

The high demand for warm neutrals and golden browns makes them an ideal choice for trans-seasonal ranges.

*When it comes to bringing warmth to simple, essential silhouettes, chocolate shades are this season's must-have, working beautifully alongside vivid brights.*

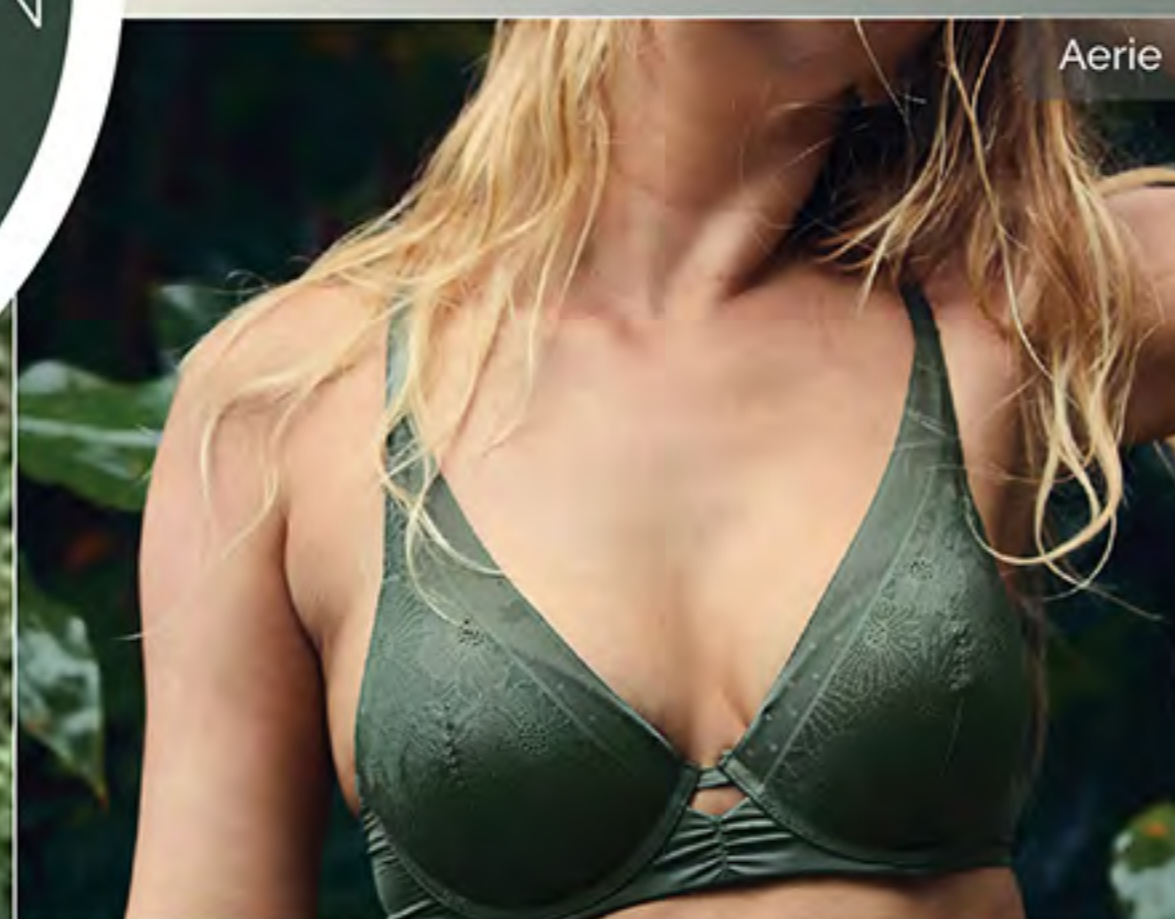
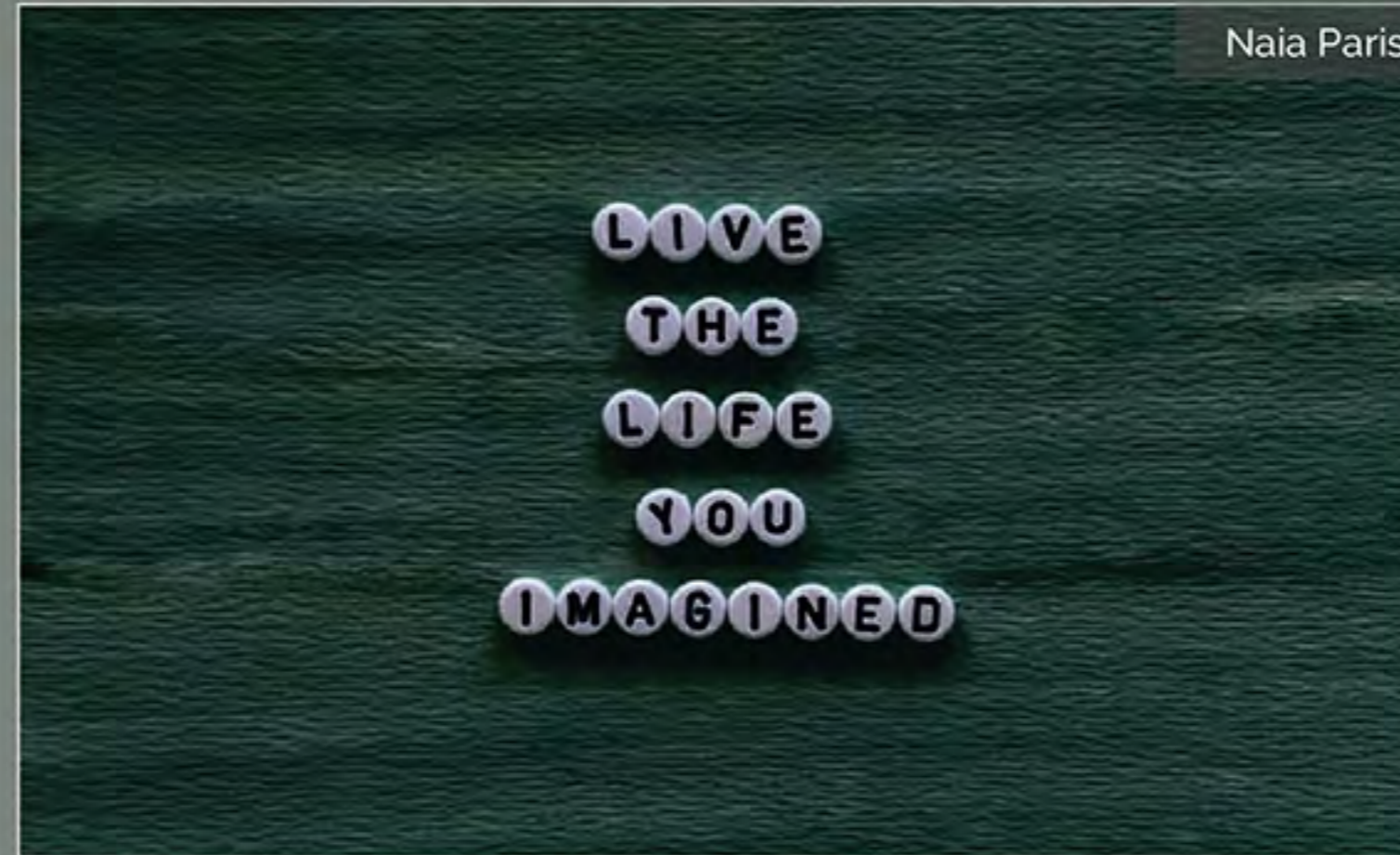
*All signs indicate that, this winter, brown is the new black. Brownie Bite is the perfect colour: its deep tone is inherently connected with the earth and nature – key themes for upcoming seasons.*

CHIC,  
TRENDY  
and  
TRANS-SEASONAL

## KEY TRENDS\_*Colour 2*

DARK  
SPRINGS  
19-4015TCX

EVERGREEN  
19-5917TCX



# HEART OF THE FOREST

For a new take on ever-popular black, look to this season's trend prediction: deep green. It's a rich alternative to black, which remains undeniably in demand in a fashion context, consistently holding the largest share of the market as a core tone.

This season's foresty tones offer an intriguing alternative to black, shifting colour in a direction that's intense, vivid and highly saturated.

*Dark green is highly versatile, too. At night, it shows up as black, while during the day, its green undertones shine through. It also works beautifully across all fashion categories, bringing with it a sense of reverence for nature.*

*For a bold, fresh look, layer various shades of green.*

COOL,  
CALM  
and  
MAGNIFICENT

## KEY TRENDS\_*Colour 3*



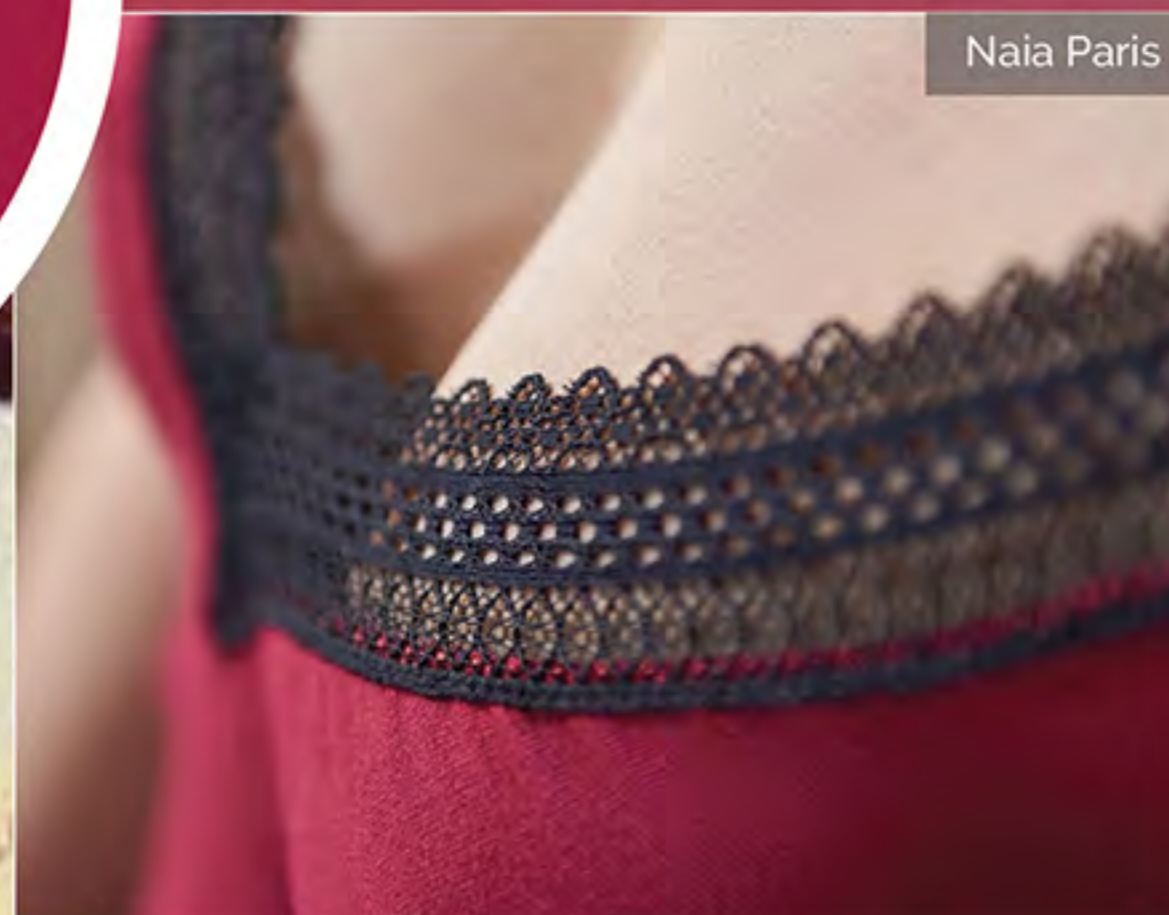
Tisja Damen lingerie



Maison Lejaby



La Perla



Naia Paris



CHERRY

19-1860TCX

# RESONANT REDS

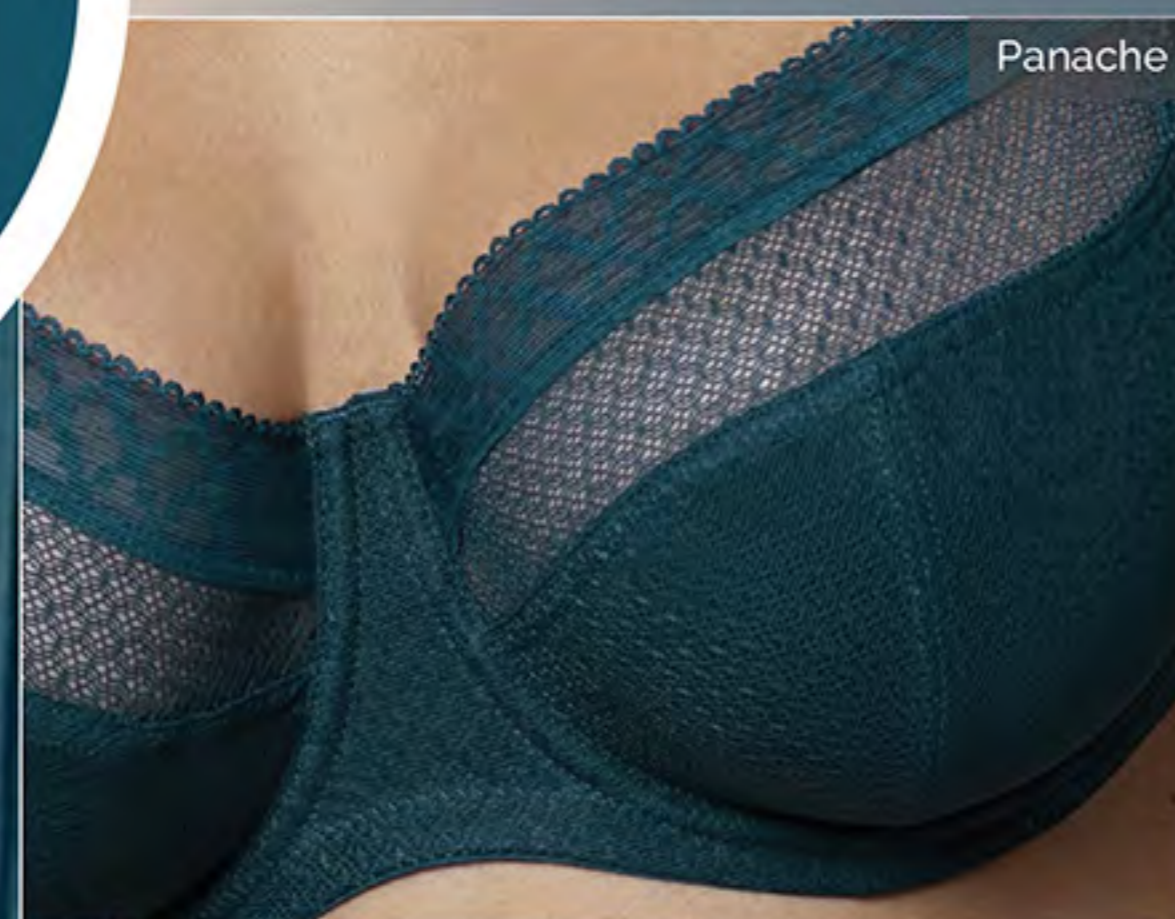
This season sees the return of red, with intense, primal tones emerging on the fashion scene.

An invigorating colour with surreal edge, electric magenta is one shade away from classic reds and burgundies. As a variation on more traditional berry tones, it's an unexpectedly relatable choice for this season.

*Red often signifies romance in the world of intimates, so we expect this brilliant magenta hue will have broad relevance across markets, with a primal quality that plays into dark, elemental themes and brings a primordial power to everything it touches.*

RICH,  
POWERFUL  
and  
SEDUCTIVE

## KEY TRENDS\_*Colour 4*



DEEP  
SEA  
DIVE  
19-4526TCX

# BLUE EVOLUTION

Against a chaotic backdrop of unpredictable politics, economics and climate change, consumers will be looking for a sense of stability and connection. This season's full and expressive shade of oceanic blue speaks to this essential need for balance, while lending a luxurious quality to designs.

*Evocative of the sea and sky, Deep Ocean Dive brings together profound sea depths and the ethereal nature of noctilucent clouds, which sit at the height of Earth's atmosphere. This colour symbolises power, integrity, tranquility and wellbeing of both the body and mind.*

TIMELESS,  
MYSTICAL  
and  
OPULENT